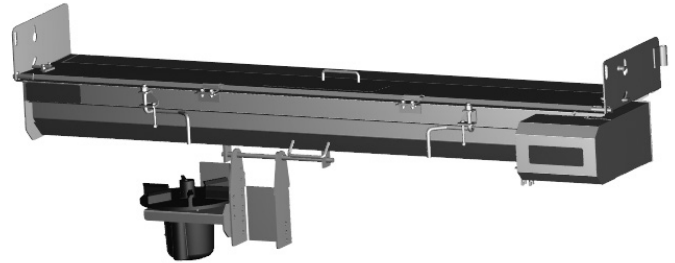


..... Instruction Manual

Under Tailgate Spreaders Electric 12 VDC 92440SSA

Table of Contents

Warranty Information	1
Spreader Installation Instructions	1,2
Spreader Installation Drawing	2
Spinner Assembly Instructions.....	3,4
Spinner Assembly Drawing	3,4
Operating Instructions	5,6
Recommended Maintenance.....	6
Parts list	7
Parts List: Hardware Box	8
Spinner Components Drawing	8



Installation Instructions

NOTE: *The left and right end plates may, on occasion, get bent through improper handling during shipment or storage. If this should happen, square and true the left and right end plates before installation.*

1. Aligning the spreader:

A. Position the spreader with the truck such that the auger gear motor is located on the right side of the truck (passenger side).

B. Lift the spreader up and under the dump body tailgate, positioning the spreader forward as close as possible to the dump body. The tailgate of the dump body should lay down horizontally over the spreader.

C. Support the spreader solidly and securely when positioning for mounting.

2. Attach mounting brackets: (See Fig. 1.)

A. Attach a quick detach plate, (1) to both sides of the spreader frame using hinge pins (2) and a hair-pin cotter pins (5).

B. Position the (2) quick detach plates over the dump body rub rails and flush with rear edge of dump body.

C. Weld the quick detach plates to the dump body rub rails. Weld the plates continuously around 3 sides of each plate. Do not weld along the edge of the plates next to the attachment pin.

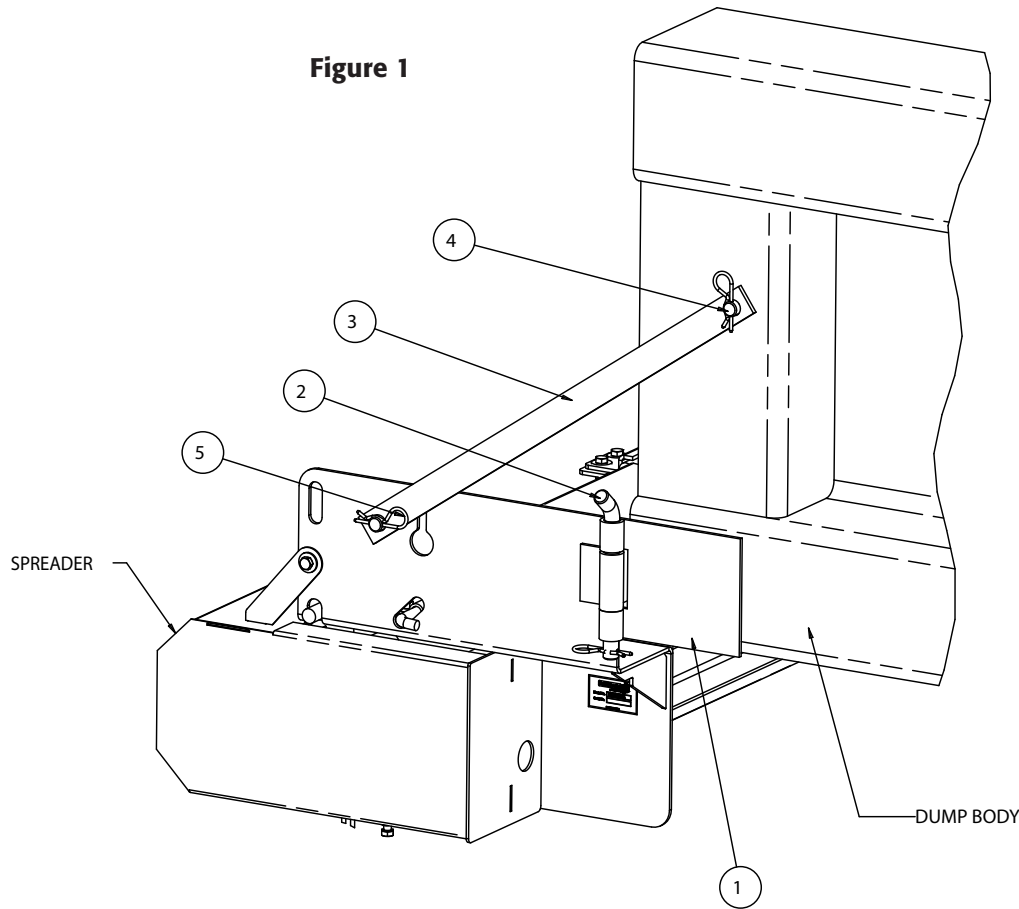
UNDER TAILGATE SPREADER WARRANTY

This warranty replaces all previous warranties and no employee of this company is authorized to extend any additional warranties, or agreements, or implications not explicitly covered herein. Buyers Products Company warrants all parts of the product to be free from defects in material and workmanship for a period of (1) one year from the date of original installation. Parts must be properly installed and used under normal conditions. Normal wear is excluded.

Any part which has been altered, including modification, misuse, accident, or lack of maintenance will not be considered under this warranty. The sole responsibility of Buyers Products Company under this warranty is limited to repairing or replacing any part(s) which are returned, prepaid, 30 days after such defect is discovered, and returned part(s) are found to be defective by Buyers Products Company.

Authorization from Buyers Products Company must be obtained before returning any part. The following information must accompany defective parts returned to Buyers Products Company: RMA#, spreader model, serial number, date installed, and distributor from whom it was purchased. Buyers Products Company shall not be liable for damage arising out of failure of any unit to operate properly, or failure, or delay in work, or for any consequential damages. No charges for transportation or labor performed on any part will be allowed under this warranty.

Mounting Hardware Installation Drawing



Bill of Materials

ITEM	QTY.	DESCRIPTION	
1	2	Quick Detach Plate	3009526
2	2	Hinge Pin	3011139
3	2	Hanger Iron Brace	3011137
4	2	Pin Brace	3000210
5	6	Hair Pin Cotter 5/32"	-

D. Align the pin brace (4) on the dump body using the iron brace (3) for exact positioning. For proper fit, hanger iron brace may require some minor bending.

E. Weld the pin braces (4) to the dump body sides, all around.

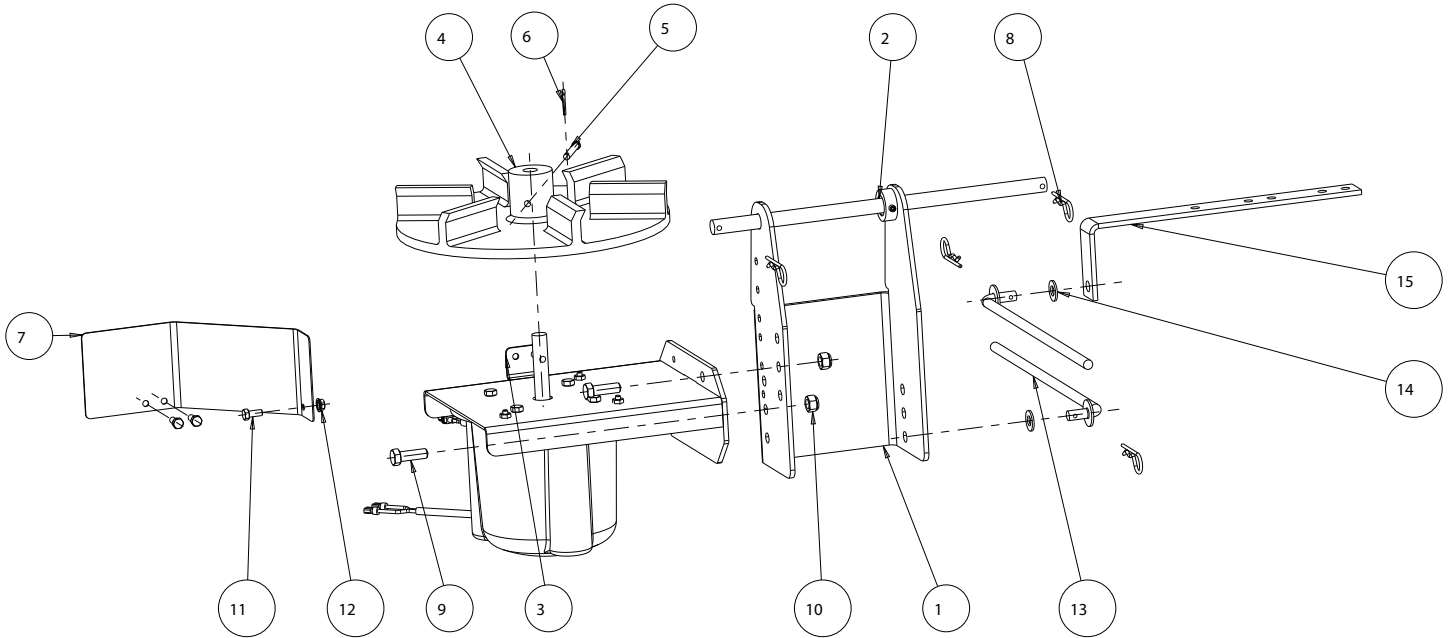
F. Attach the iron braces (3) to the pin braces on the sides of the dump body and the sides of the spreader using two hairpin cotter pins (Item 5).

G. If there is a gap between the spreader and the dump body, weld or bolt a steel strip to the forward edge of the spreader to cover the gap.

H. If you have purchased the tailgate side shields (purchased separately as P/N 924F0106), bolt or weld them to the inside of the tailgate to prevent material spillage at the ends of the spreader.

2. Spinner assembly installation:

Figure 2



- A.** Attach heights adjustment bracket (1) to spreader lower tray using rod hinge (2) and hair pins.
- B.** Attach spinner motor assembly (3) to heights adjustment bracket (1) using 1/2-13 screws and nuts.
- C.** If extra clearance required, use upper holes in heights adjustment bracket.
- D.** Attach spinner shield (7) to heights adjustment bracket (1) using 5/16-18 screws and nuts.
- E.** Attach spinner disk (4) to motor shaft using clevis pin and cotter pin.

Bill of Materials

ITEM	QTY.	DESCRIPTION	
1	1	Bracket Heights Adj. Weldment	3017175
2	1	Rod, Hinge	3006646
3	1	Bracket Spinner Motor Assembly	3017176
4	1	Spinner, 14" Poly CCW	3016394
5	1	Pin, Clevis, 5/16 x 2-1/2, .141 Hole ZN	-
6	1	Cotter Pin, 1/8 x 1, Zinc	-
7	1	Shield Spinner Disk	3017172
8	4	Pin, Hair Cotter 5/32" ZN 3.25 OAL	-
9	2	Screw, HHC 1/2-13x1.50 SST	-
10	2	Nut, Nylock 1/2-13 Zinc	-
11	3	Screw, Hex HD, 5/16-18 x 3/4 GR5 SS	-
12	3	Nut, Hex Flange - 5/16-18 SS	-
13	2	Weldment, Parallel Linkage	924F0012
14	2	Washer, Flat 1/2 ID SST	-
15	1	Angle, Spinner Lug	3006645

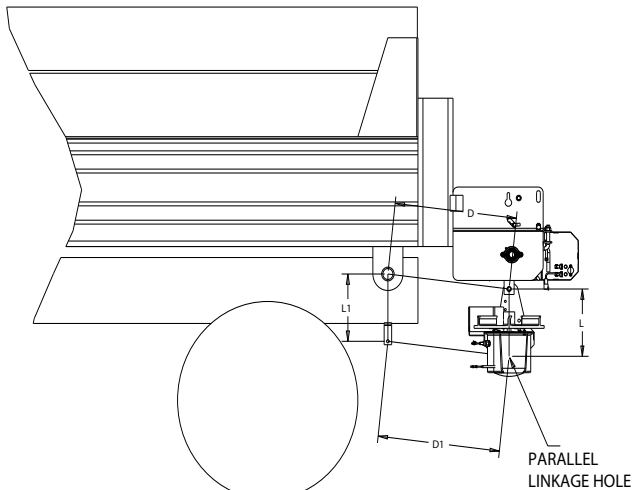


Figure 3

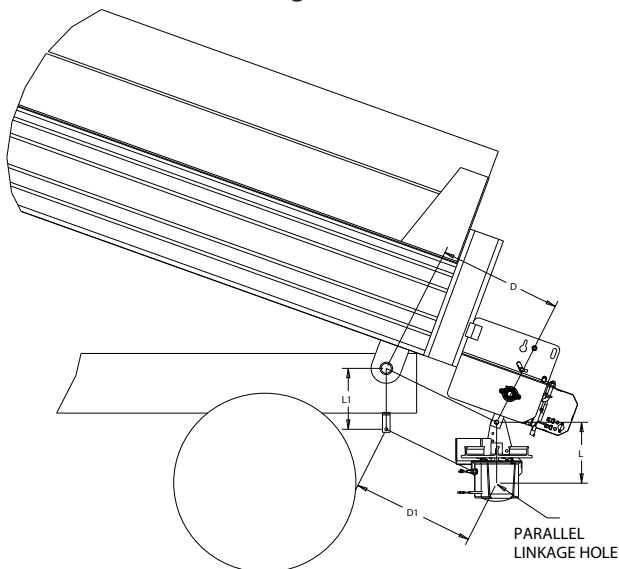


Figure 4

- F.** The leveling mechanism may now be mounted. Park truck on flat, level surface. With spinner assembly in level position, carefully measure “L” and “D” distances. Use any of 3 available holes in heights adjustment bracket. Locate angle (15) such that ½” hole will position with $D1=D$ and $L1=L$. Modify angle if necessary.
- G.** Secure angle (15) to the truck frame.
- H.** Attach parallel linkage rods (13) to heights adjustment bracket and angle. Secure them using ½” washers and hair pins.
- I.** Clamp parallel linkage rods together. To verify leveling action, slowly raise the dump. Be sure that spinner motor assembly and linkages do not have any interference with truck body and it does not have contact with the road. After checking weld parallel linkage bars together.

J. Keeping the spinner assembly level, secure the spinner frame in place using the set screw or 5/16-18 hex screw.

3. Control Box and Vehicle Wiring Harness Installation

MAKE SURE YOU HAVE CONNECTED THE PROPER WIRE COLOR.

THIS IS WIRE GROUND ELECTRICAL SYSTEM! NO CONNECTIONS TO TRUCK’S FRAME OR BODY ALLOWED!

WARNING

WARNING! Do not drill holes into fuel tanks, fuel lines, through electrical wiring, etc that may be damaged by drilling. To insure good performance of your spreader, check the condition of truck’s electrical system. Using digital voltmeter, check alternator and battery voltage. With engine running and head lights and heater fan ON good voltage reading should fall between 13.0 and 15.3 volts. If voltage reading falls out of this range, check and adjust your electric system.

NOTE: Always disconnect battery before attempting to install electrical components on your vehicle.

A. Mount the controller in a convenient location in the truck cab. It is recommended not to mount the controller directly in front of heat vents. Allow ample air space around controller.

CAUTION

DO NOT MOUNT CONTROLLER IN THE WAY OF AIR BAG DEPLOYMENT!

B. Route both wire harnesses into truck cab through firewall (it maybe necessary to drill holes). Insulate hole to avoid water leaks.

C. Insure no wires are nicked or damaged during installation.

D. Connect the 4-pin connector on the wire harness to the control box 4-pin connector.

E. Connect the 2-pin connector on the power cable to the control box mating connector.

F. Connect wire harness single connectors to control box connectors.

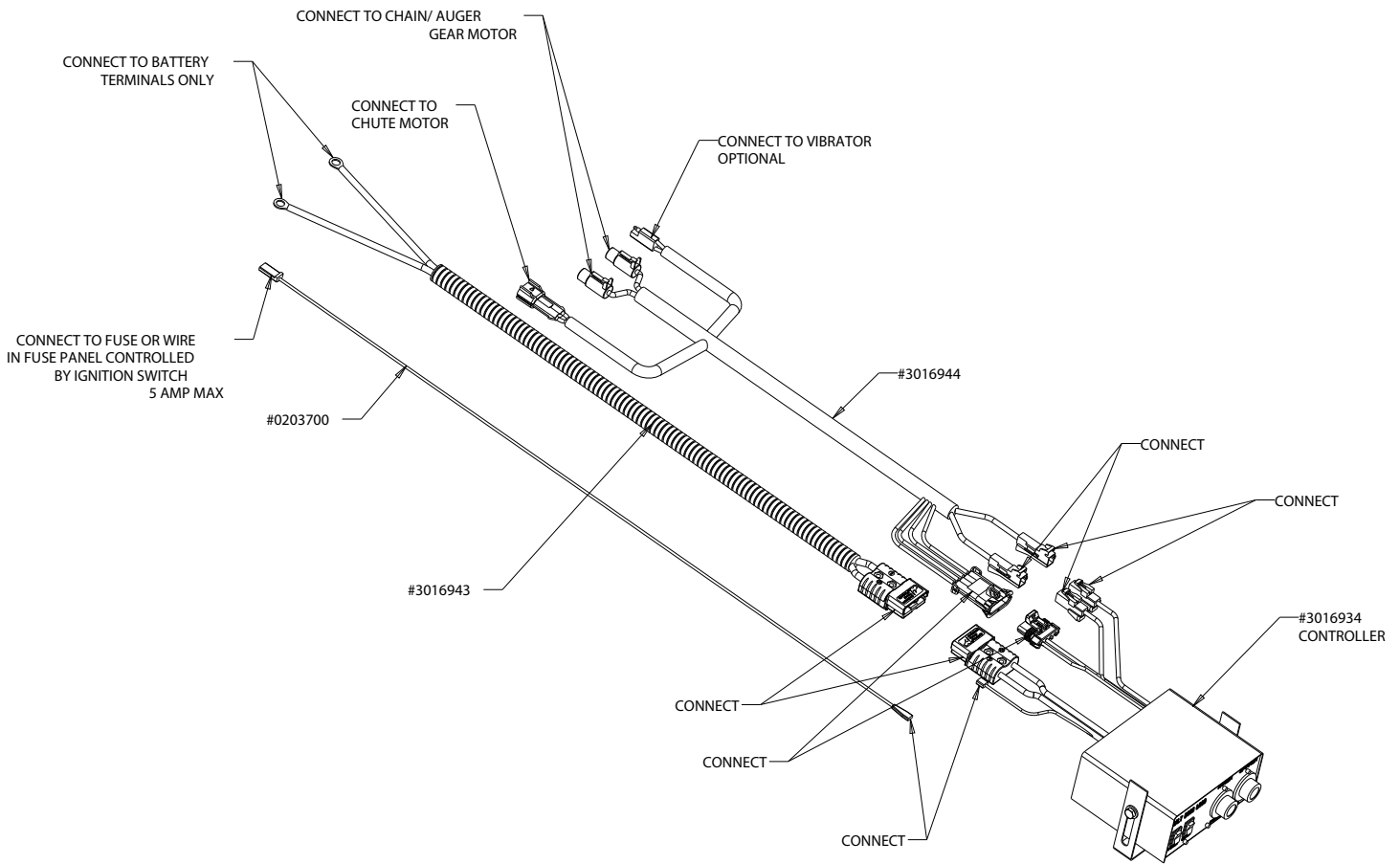
G. Connect fuse connector to the fuse terminal or ignition switch (5 AMP max).

H. Lay out a path for the power cable to the battery, use quick ties to secure power cable.

DO NOT CONNECT TO BATTERY AT THIS TIME!

I. Lay out path for wire harness to the rear of the vehicle. It is recommended to stay clear of the exhaust system. Excess heat can damage the wire harnesses. Use quick ties to secure harness to underbody.

J. Connect the wire harness to the motor. Make sure wire colors on wire harness match colors on the motor.



Thoroughly clean battery terminals. Make sure battery terminals have no tarnish or corrosion. **DO NOT CONNECT WIRE HARNESS TO DAMAGED OR CORRODED TERMINALS!**

IT MAY RESULT IN OVERHEATING, LOST POWER AND POTENTIAL CONTROLLER DAMAGE!

K. Connect the power cable directly to the battery.

L. Insure all functions of the controller are working properly.

M. Observe auger moving in proper direction. If direction is wrong reverse wires between Motor and Wire Harness.

N. Optional spot light (5 AMP max) can be installed on spreader. Remove cap from single white wire. Connect light to this wire and trucks frame.

⚠ IMPORTANT

IMPORTANT Make sure all wires securely attached to vehicle or spreader. Use wire ties and/or wire clamps to attach wires. All excess wires must be rolled into bungles and attached to vehicle or spreader.

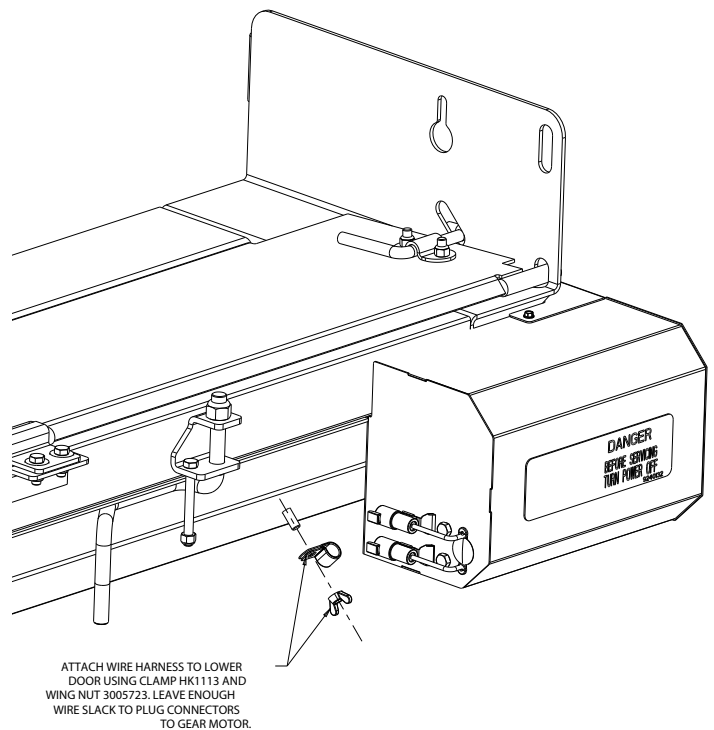
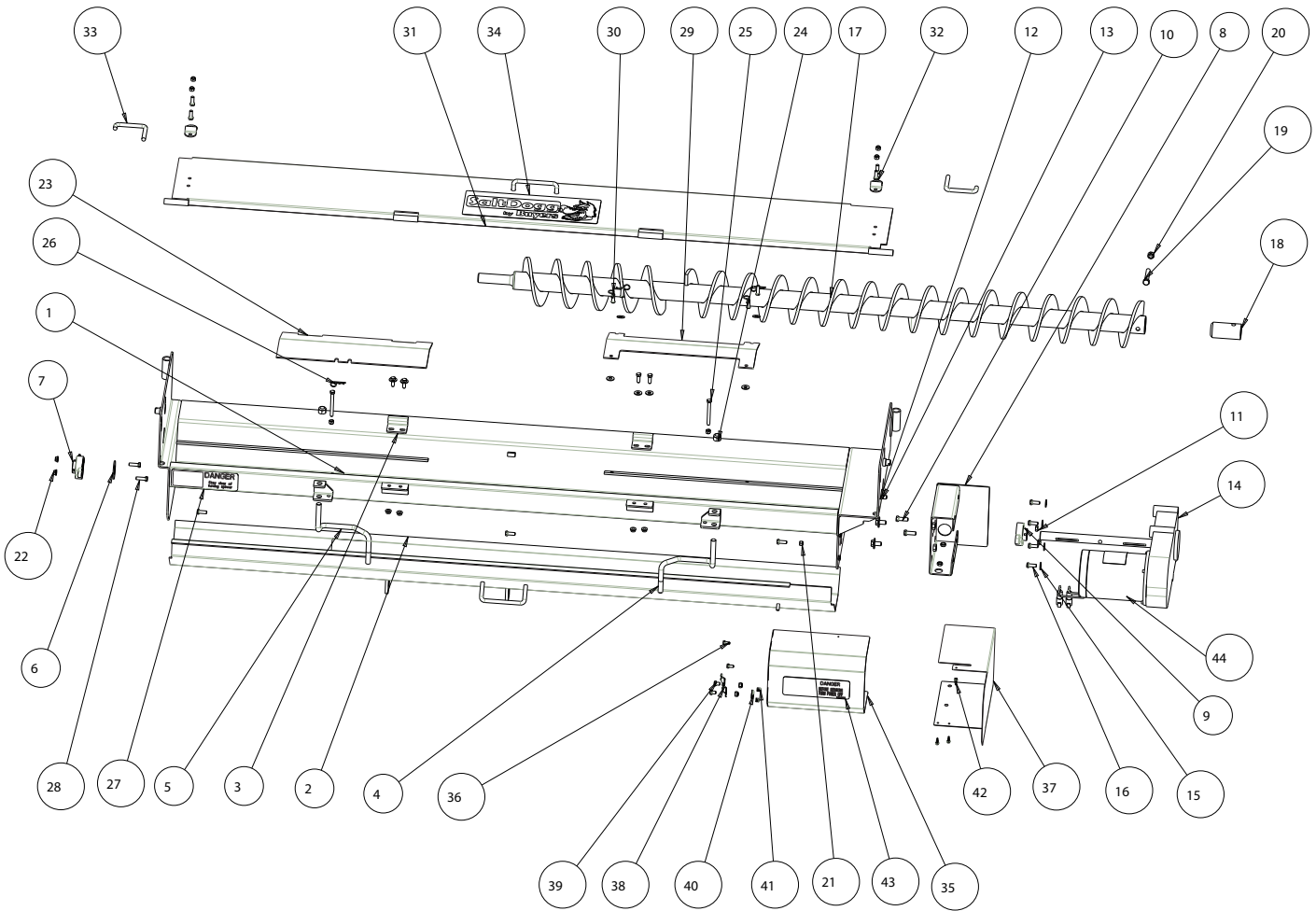


Figure 5

Spreader Assembly Parts List

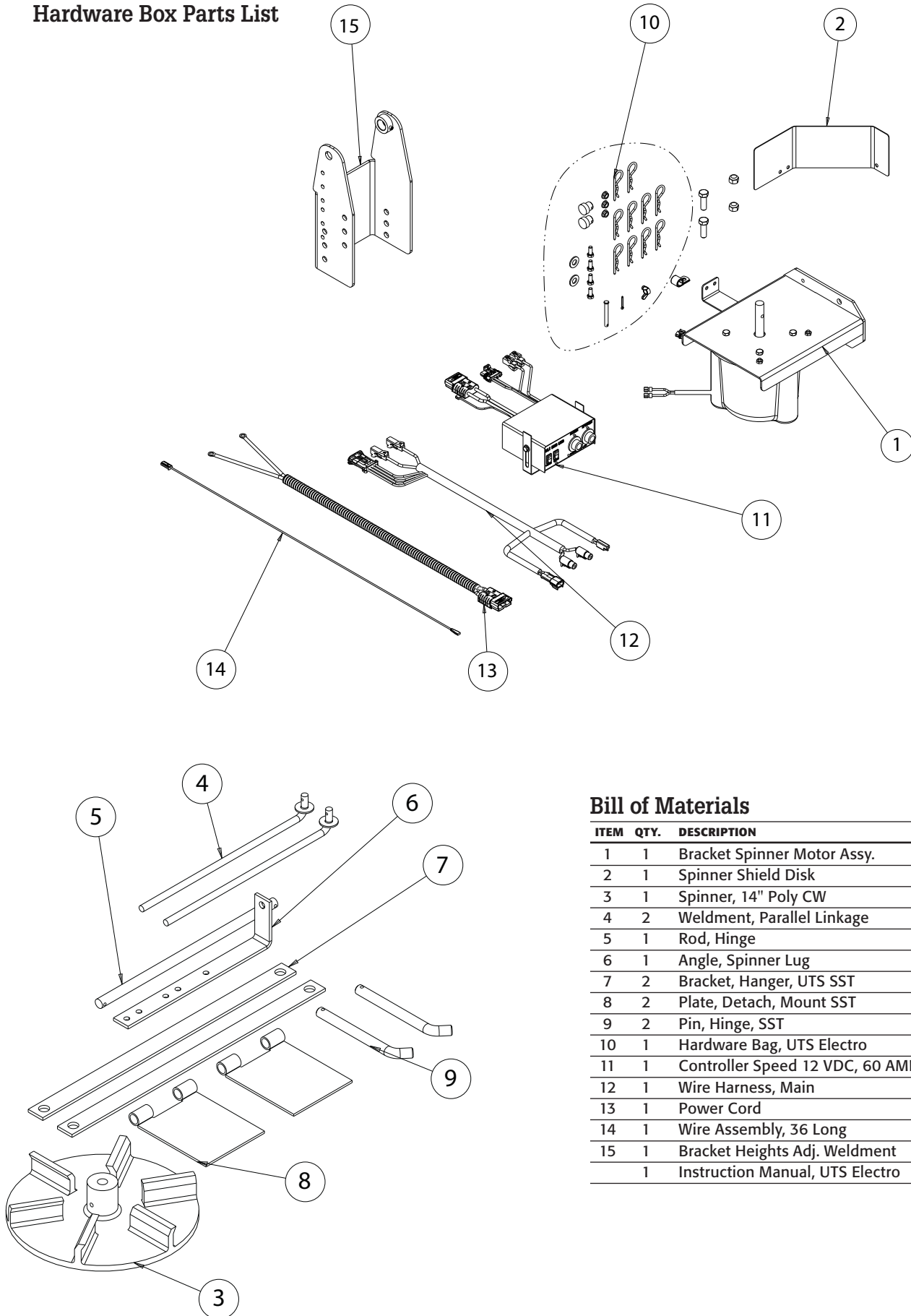


Bill of Materials

ITEM	QTY.	DESCRIPTION	PART NO.
1	1	Frame, Welded, 96 UTS SS	3015029
2	1	Tray, Lower Weldment, SS 96 UTS	3015033
3	2	Latch, Cover HNG MTG BRKT	3008447
4	1	Rod, Latch, UTS Tray SST PS	3019033
5	1	Rod, Latch, UTS Tray SST DS	3019032
6	1	Gasket, Felt Bearing	9240087
7	1	Bearing, 1-1/4 Flange 2 Hole	9240086
8	1	Adapter, Gear Motor, Weldment	3014455
9	1	Bearing, Flanged 1-1/8"	1410200
10	2	Screw, HCAP 7/16-14 x 1.25 SST	-
11	2	Nut HEX NYLOCK 7/16-14 SST	-
12	3	Washer, Flat 1/2 USS, SST	-
13	3	Screw, HHC- 1/2-13 X 1 SST	-
14	1	Gear Motor Conveyor 12 VDC	3013821
15	12	Washer, Flat 3/8 USS SST	-
16	15	Screw, HHC 3/8-16 x 1 304 SST	-
17	1	Weldment, 96 UTS Auger	924F0081
18	1	Sleeve, Auger Adapter	3014858
19	1	Screw, HHC - 1/2-13 x 3 SST	-
20	1	Nut, Nylock 1/2-13 Zinc	-
21	11	Nut, Nylock 3/8-16 SST	-
22	6	Nut, Hex FLNG 3/8-16 SST	-

ITEM	QTY.	DESCRIPTION	PART NO.
23	1	Plate, Spinner Cover	3000270
24	2	Nut NYLOCK 5/8-11 SST	-
25	2	Screw, HHC - 3/8-16 X 3.5 SST	-
26	5	Pin, Hair Cotter, Clear Zinc .091 x 2	-
27	1	Decal, #1, Danger Stay Clear	9240131
28	2	Screw, HHC - 3/8-16 X 1.25 SST	-
29	1	Plate, Auger Cover	3014897
30	4	Pin, Clevis 3/8 x 1.125 SST	-
31	1	Weldment, Cover, 96IN UTS SST	3012956
32	2	Bracket, SST Cover Latch w. Holes	3006968
33	2	Handle, Stainless Steel Locking	3000268
34	1	Decal, Salt Dogg, BLK/WHT on CLR	3011132
35	1	Cover, Gear Motor Weldment	3017187
36	2	Screw, HHC - 5/16-18 X 5/8 SST	-
37	1	Cover Side Gear Motor	3017186
38	2	Bracket, Receptacle SZ8 Deutsch	3017121
39	2	Screw, HHC - 3/8-16 X 1.25 SST	-
40	1	Plug 1.00" Dome Heyco 1702	3017483
41	2	Bushing Strain Relief Heyco 2047	3017482
42	3	Screw #12-14x. 74 SS	3015873
43	1	Decal #2, Danger Before Svce	9240132
44	1	Motor Replacement for 3013821	3014778

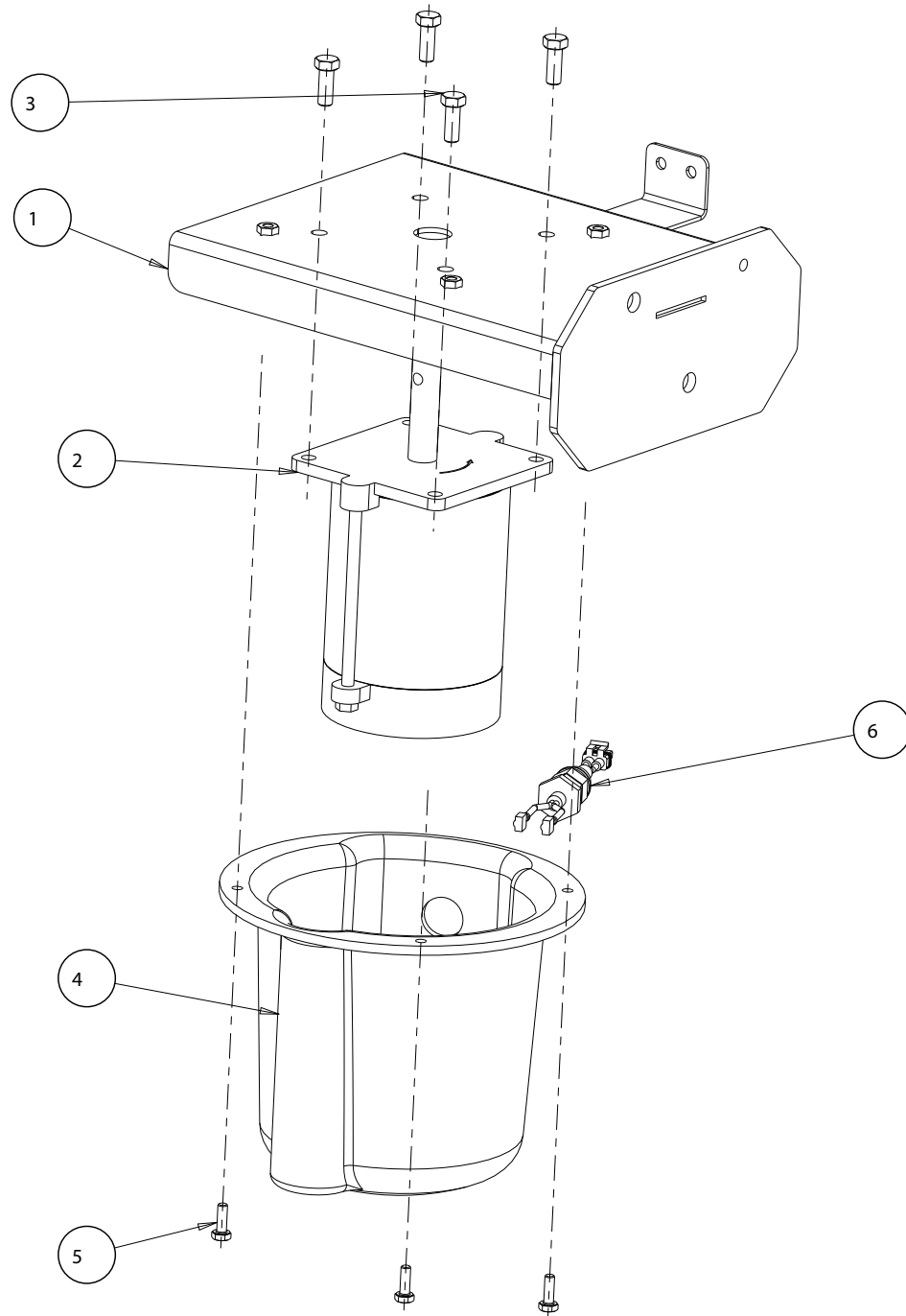
Hardware Box Parts List



Bill of Materials

ITEM	QTY.	DESCRIPTION	PART NO.
1	1	Bracket Spinner Motor Assy.	3017176
2	1	Spinner Shield Disk	3017172
3	1	Spinner, 14" Poly CW	3016394
4	2	Weldment, Parallel Linkage	924F0012
5	1	Rod, Hinge	3006646
6	1	Angle, Spinner Lug	3006645
7	2	Bracket, Hanger, UTS SST	3011137
8	2	Plate, Detach, Mount SST	3009526
9	2	Pin, Hinge, SST	3011139
10	1	Hardware Bag, UTS Electro	3015181
11	1	Controller Speed 12 VDC, 60 AMP	3016934
12	1	Wire Harness, Main	3016944
13	1	Power Cord	3016943
14	1	Wire Assembly, 36 Long	0203700
15	1	Bracket Heights Adj. Weldment	3017175
1	1	Instruction Manual, UTS Electro	3017501

Spreader Motor Assembly



Bill of Materials

ITEM	QTY.	DESCRIPTION	PART NO.
1	1	Bracket Weldment, Spinner Motor	3017171
2	1	Motor 12 VDC, .5 HP Spinner	3016309
3	4	Screw, HHC 3/8-16 x 1 304 SST	-
4	1	Cover, Motor, Drilled	3017174
5	3	Screw, Cap 1/4-20 x 3/4 SST	-
6	1	Wire Harness, Chute	3006753